



# City of San Leandro

Meeting Date: July 20, 2015

## Minutes

---

**File Number:** 15-415

**Agenda Section:** CONSENT CALENDAR

**Agenda Number:** 8.C.

**TO:** City Council

**FROM:** Chris Zapata  
City Manager





**BY:** Keith Cooke  
Engineering & Transportation Director

**FINANCE REVIEW:** Not Applicable

**TITLE:** Highlights of the Facilities and Transportation Committee Meeting of June 2,  
2015

---

**LEGEND**

-  PROPOSED STRIPING
-  PROPOSED CROSSWALK
-  PROPOSED SIDEWALK/MEDIAN
-  EXISTING SIDEWALK/MEDIAN TO BE REMOVED

**NOTES**

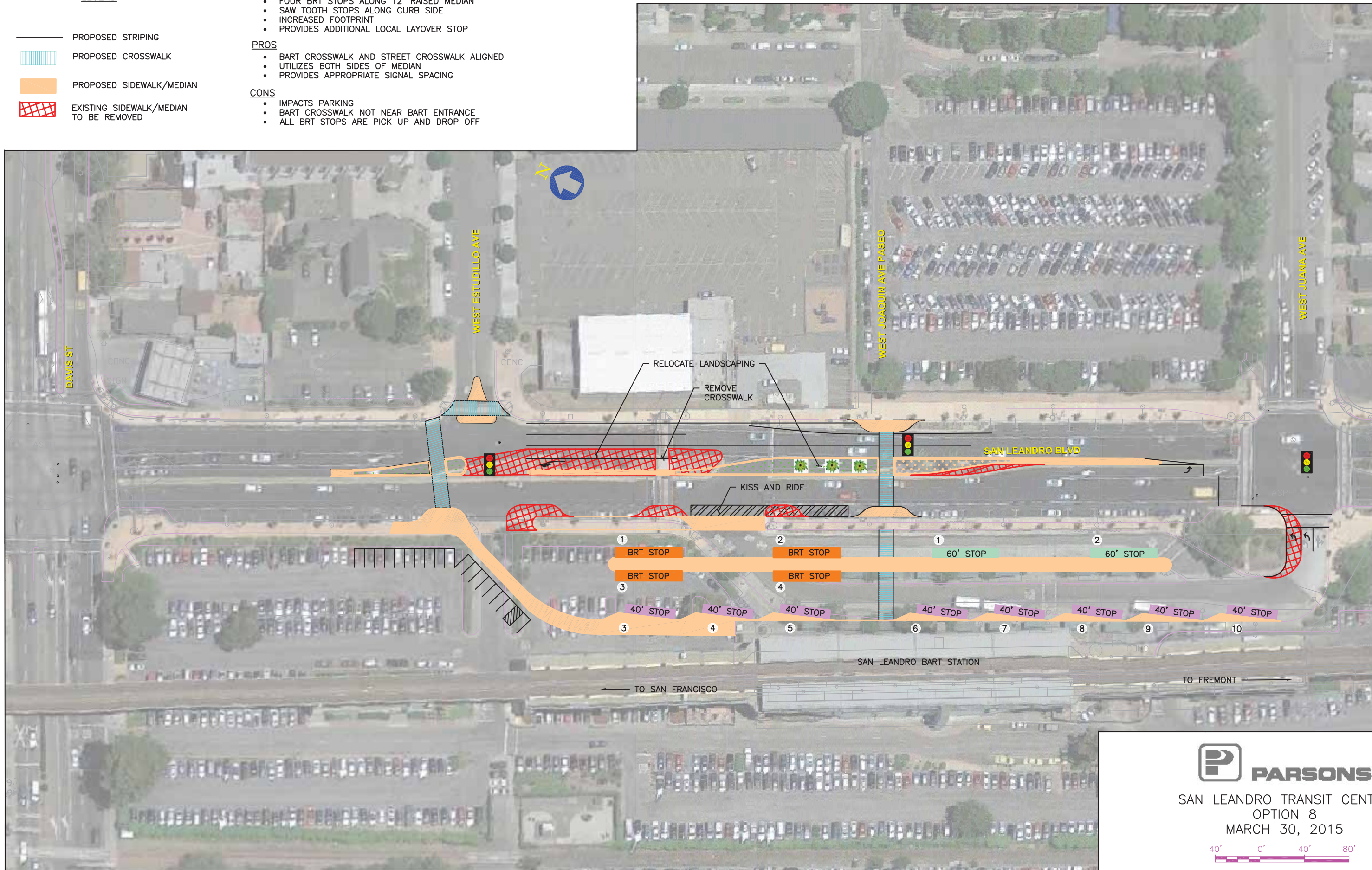
- FOUR BRT STOPS ALONG 12' RAISED MEDIAN
- SAW TOOTH STOPS ALONG CURB SIDE
- INCREASED FOOTPRINT
- PROVIDES ADDITIONAL LOCAL LAYOVER STOP

**PROS**

- BART CROSSWALK AND STREET CROSSWALK ALIGNED
- UTILIZES BOTH SIDES OF MEDIAN
- PROVIDES APPROPRIATE SIGNAL SPACING

**CONS**

- IMPACTS PARKING
- BART CROSSWALK NOT NEAR BART ENTRANCE
- ALL BRT STOPS ARE PICK UP AND DROP OFF



SAN LEANDRO TRANSIT CENTER  
 OPTION 8  
 MARCH 30, 2015



# East Bay BRT and the San Leandro Transit Center



San Leandro City Council  
Transportation and Facilities Committee  
June 2, 2015

# Opening Remarks

**Elsa Ortiz**

Vice President

AC Transit Board of Directors





## East Bay BRT - Project Scope

- 9.5-mile alignment with a combination of mixed-flow and 80% dedicated bus-only lanes
- Begins at the Uptown Station in Oakland and terminates at the San Leandro BART Transit Center
- Includes 34 stations – 46 total platforms
  - 21 median
  - 12 curbside
  - 1 southern terminus (BART)
- 27 hybrid-electric, low-emission, 60-foot articulated buses
- Revenue Service Date – November 27, 2017
- Features include:
  - Transit Signal Priority (TSP)
  - Level-boarding platforms
  - Shelters and benches
  - Ticket Vending Machines (TVMs)
  - Real-time arrival information
  - Surveillance cameras
  - Pre-paid boarding with proof of payment fare enforcement

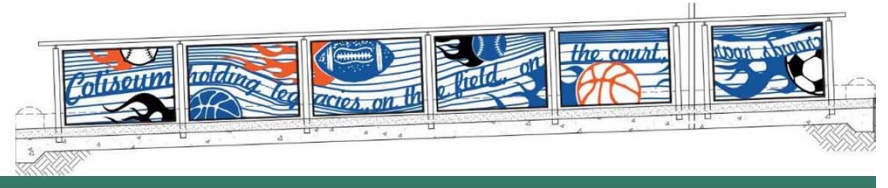
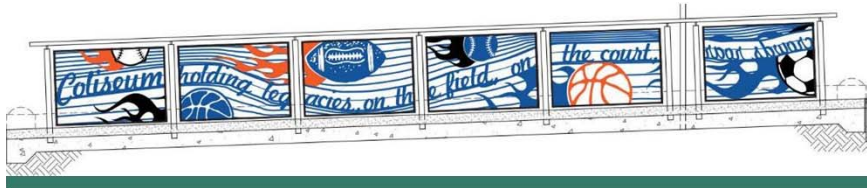






# Project Alignment



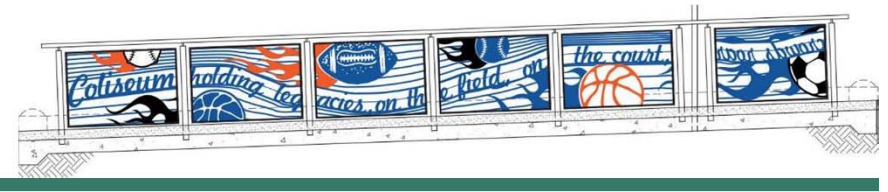
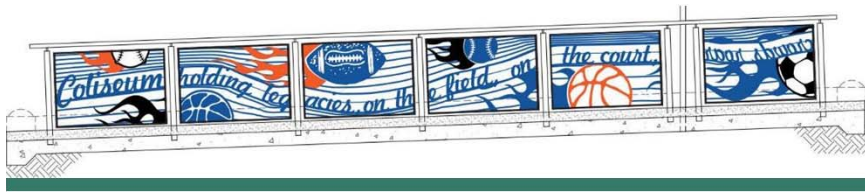


# Project Schedule

| Milestones / Deliverables      | 2012  |    |    | 2013              |    |    |    | 2014                            |    |    |    | 2015  |    |    |    | 2016  |    |    |    | 2017 |    |    |    |
|--------------------------------|-------|----|----|-------------------|----|----|----|---------------------------------|----|----|----|---|----|----|----|---|----|----|----|------|----|----|----|
|                                | Q2    | Q3 | Q4 | Q1                | Q2 | Q3 | Q4 | Q1                              | Q2 | Q3 | Q4 | Q1  | Q2 | Q3 | Q4 | Q1  | Q2 | Q3 | Q4 | Q1   | Q2 | Q3 | Q4 |
| <b>Milestones</b>              | ▲ ROD |    |    | PE Complete ▲     |    |    |    | SSGA Issuance ▲                 |    |    |    |   |    |    |    | ▲ RSD   |    |    |    |      |    |    |    |
| <b>Final Design</b>            |       |    |    | Advance Utilities |    |    |    | Parking Lots & Fruitvale Bypass |    |    |    | Roadway / Communications / Stations / Landscape |    |    |    |   |    |    |    |      |    |    |    |
| <b>Real Estate Acquisition</b> |       |    |    |                   |    |    |    |                                 |    |    |    |   |    |    |    |   |    |    |    |      |    |    |    |
| <b>Vehicle Procurement</b>     |       |    |    |                   |    |    |    |                                 |    |    |    |   |    |    |    |   |    |    |    |      |    |    |    |
| <b>Construction</b>            |       |    |    |                   |    |    |    | Advance Utilities               |    |    |    | Parking Lots & Fruitvale Bypass                 |    |    |    | Roadway / Communications / Stations / Landscape |    |    |    |      |    |    |    |
| <b>Start-up and Testing</b>    |       |    |    |                   |    |    |    |                                 |    |    |    |   |    |    |    |   |    |    |    |      |    |    |    |

Critical Path



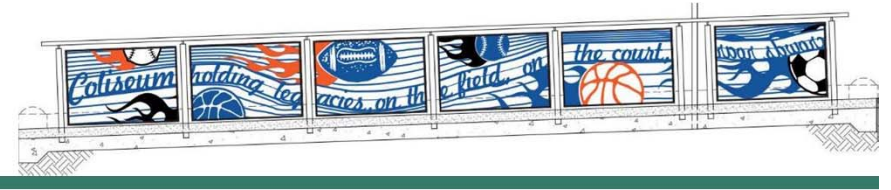
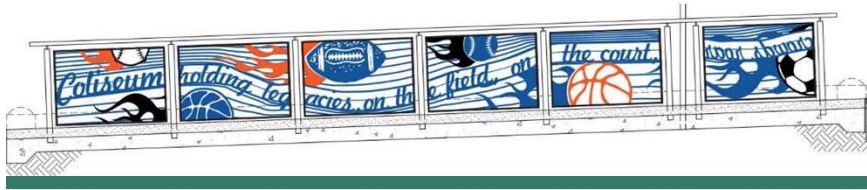


# Project Labor Agreement/ Construction Careers Policy

- Targeted Hiring Goals
  - 20% apprentice utilization
  - 25% "Disadvantaged Resident" utilization
- Workforce Development Fund
  - \$0.10 for every craft hour to be utilized to train and refer "Disadvantaged Residents" to the project
- Community Oversight
  - Two advisory committees oversee adherence to policy provisions
  - Carl Jones, North CA Coalition of Black Trade Unionists & San Leandro resident serves on committee







## Business Utilization

### Goals

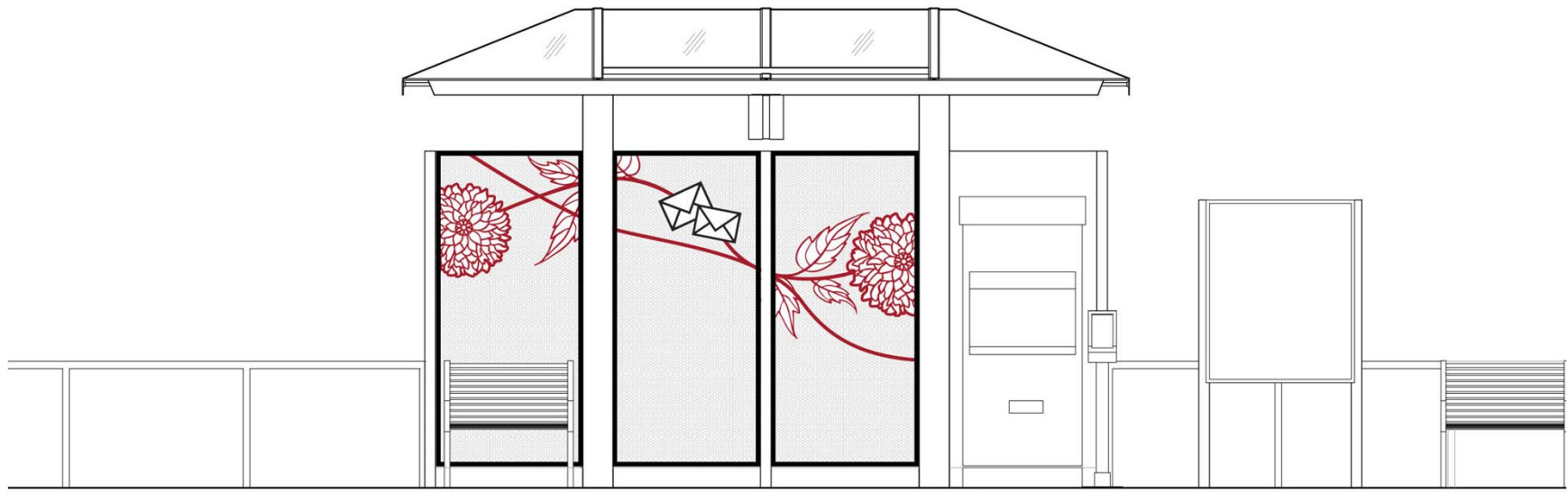
- Bid Package 1 – Advanced Utility Relocations  
12% SBE goal
- Bid Package 2 – Parking Lots & Fruitvale Bypass  
25% SBE goal
- AC Transit Districtwide  
8% DBE goal

### Actuals

- Bid Package 1- Advanced Utility Relocations  
McGuire & Hester (local)  
6 SBE firms listed; 3 DBE firms listed
- Bid Package 2 - Parking Lots & Fruitvale Bypass  
Redwick - Prime contractor is a Small local business  
5 DBE firms listed



# East Bay BRT - Artistic Enhancements



# San Leandro Transit Center

## PROJECT DESCRIPTION

***Expand the Transit Center at the San Leandro BART Station to accommodate:***

- EB-BRT Southern Terminus
- All Existing AC Transit Routes
- All Shuttles and Locals



# San Leandro Transit Center

## PROJECT GOALS

***Work collaboratively with BART and the City of San Leandro to provide the best overall solution:***

- Provide for all required bus transit stops
- Provide for a Transit Center update
- Provide for improve pedestrian circulation
- Provide for improved ADA accessibility





# San Leandro Transit Center

## EXISTING BUS/SHUTTLE SERVICE

- 1 / 801 (South)
  - (Bay Fair BART / Fremont BART)
- 1 / 801 (North)
  - (Berkeley BART / Oakland)
- 75 Clockwise
- 75 Counterclockwise
- 85
- 89 Counterclockwise
- 89 Clockwise
- Links North Loop
- Links South Loop
- Flex Shuttle
- Kaiser Shuttle



# San Leandro Transit Center

## EXISTING BUS/SHUTTLE SERVICE

- 1 / 801 (South)
  - (Bay Fair BART / Fremont BART)
- 1 / 801 (North)
  - (Berkeley BART / Oakland)
- 75 Clockwise
- 75 Counterclockwise
- 85
- 89 Counterclockwise
- 89 Clockwise
- Links North Loop
- Links South Loop
- Flex Shuttle
- Kaiser Shuttle

## FUTURE EAST BAY - BRT SERVICE

- 3 Raised Platforms (Minimum)
  - Arrivals every 5 minutes
  - 10 Minute Layovers

*No Allowance for delays, emergencies, or mechanicals*



# San Leandro Transit Center

## DESIGN CHALLENGES

- The design is “work in process” and there is no agreement on the Transit Center footprint
- Maintain the ingress north of the Transit Center entrance on San Leandro Blvd
- Minimize the loss of parking spaces
- Relocation and re-timing of the traffic signals
- Provide for a signaled pedestrian crossing



# San Leandro Transit Center

## DESIGN CONSIDERATIONS – FROM THE BRT BUSES

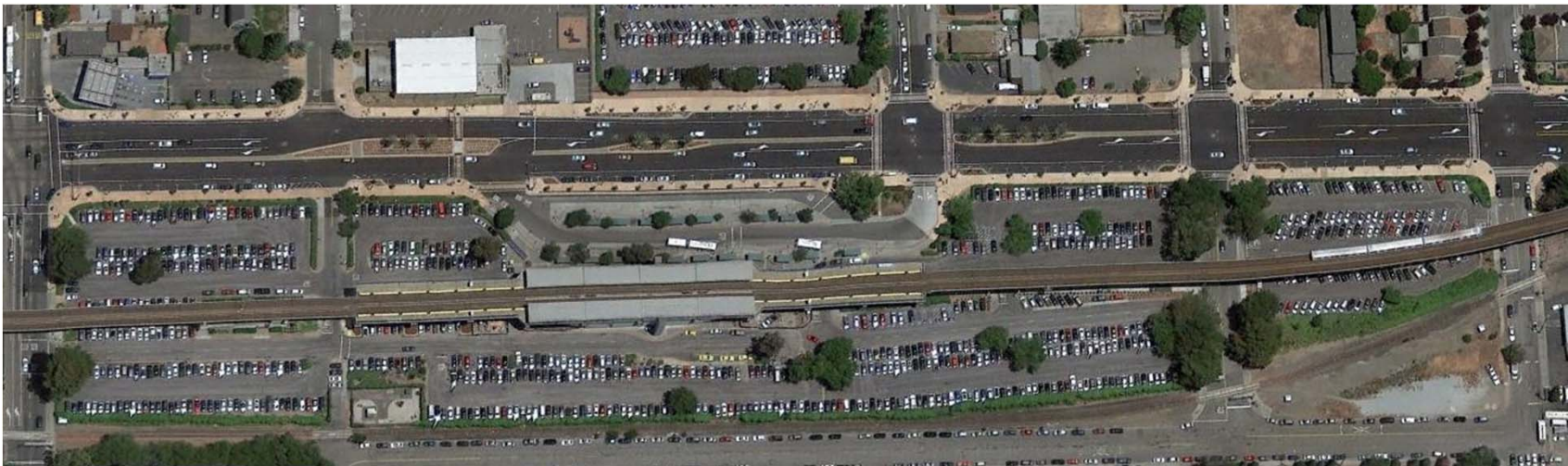
- BRT buses are 60' articulated buses
- BRT buses utilizes level boarding which requires raise platforms at the station
- BRT buses provide for dual side boarding
- BRT buses require 127'8" separation in order to provide for pull around capabilities





# San Leandro Transit Center

## DESIGN ROADMAP – EXISTING CONDITIONS



# San Leandro Transit Center

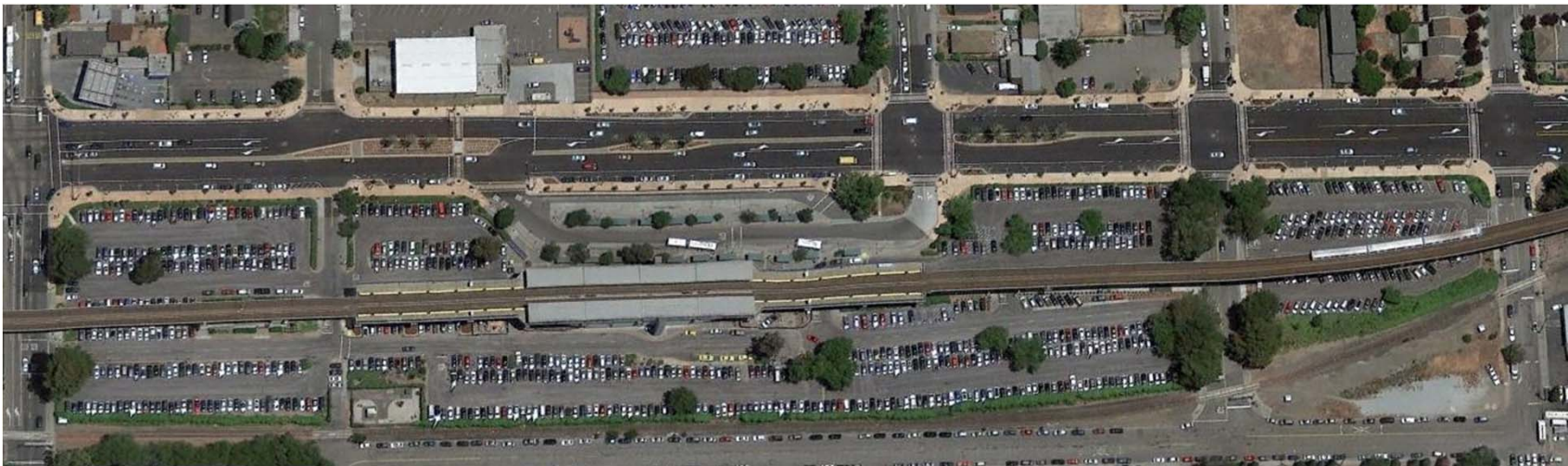
## DESIGN ROADMAP – HISTORY (no agreement on a footprint)

- **There is currently no agreement on a footprint**
- **Efforts before November 2014 produced a version 1**
- **Fresh eyes review focused on smaller footprint**
- **Revisited functional requirements**
- **Studied alternative designs**
  - **Four small footprints**
  - **Four large footprints**
- **Conducted simulation study**
- **Developed a concept plan for input and comment from partners**



# San Leandro Transit Center

## DESIGN ROADMAP – EXISTING CONDITIONS





# San Leandro Transit Center

## DESIGN ROADMAP – CURRENT CONCEPT PLAN FOR COMMENTS





# San Leandro Transit Center

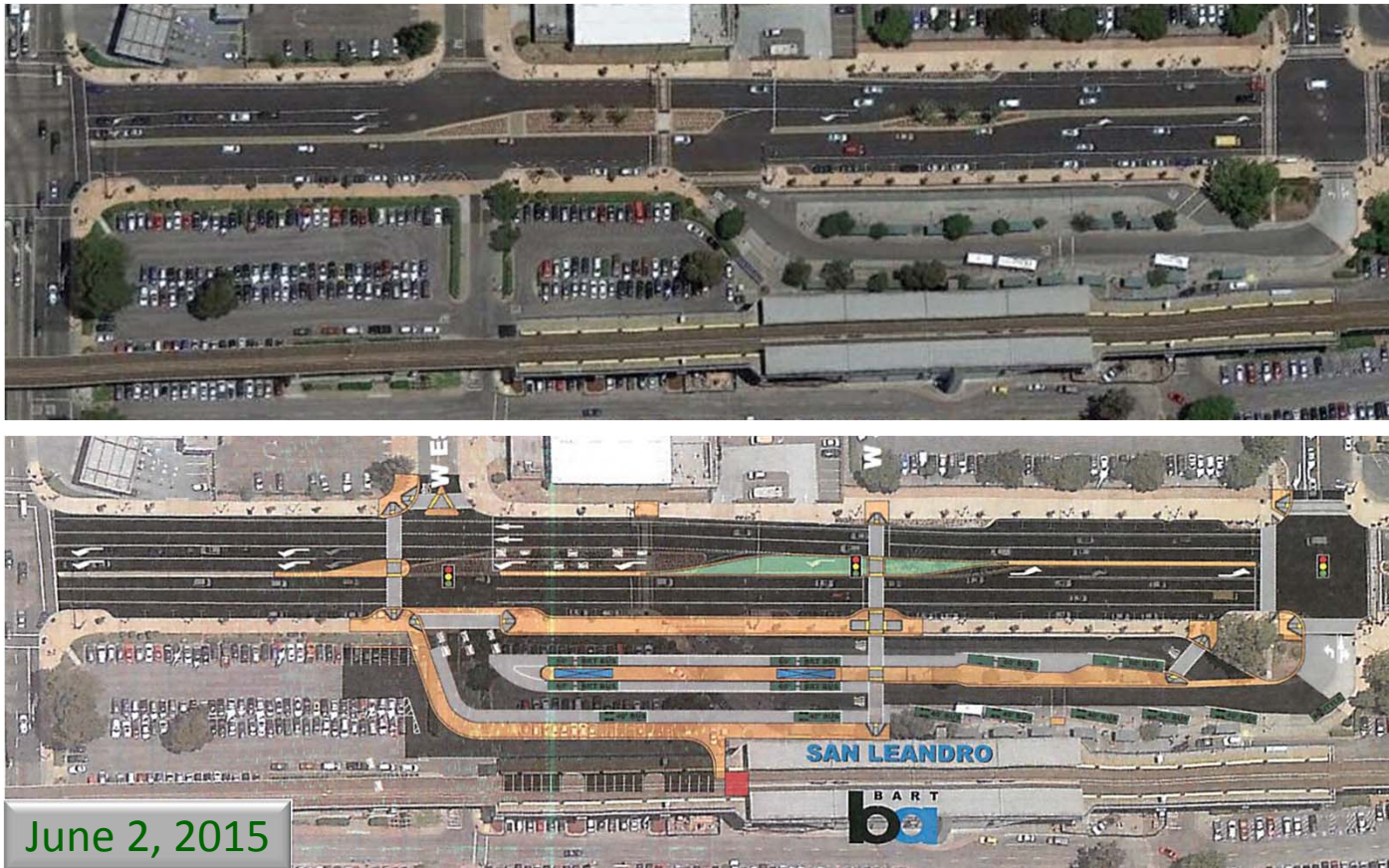
## DESIGN ROADMAP – CURRENT CONCEPT PLAN FOR COMMENTS

- **Relocation of driveway entrance from San Leandro Blvd**
  - Loss of parking
  - Loss of ingress driveway north of station
- **Net BRT Island Platforms**
- **Rehabilitate remaining bays**
- **New Sidewalk along San Leandro Blvd**
- **New signaled pedestrian crossing of San Leandro Blvd aligned with the Paseo**



# San Leandro Transit Center

## DESIGN ROADMAP — CURRENT V CONCEPT PLAN



# San Leandro Transit Center

## DESIGN ROADMAP – CURRENT CONCEPT PLAN DISCUSSION

### Discussion from City Elected Officials and Staff

- Comments
- Issues
- Suggestions



# San Leandro Transit Center

## BART COMMENTS

Hannah Lindelof

Senior Planner

BART Planning and Development



# Participants

- **Elsa Ortiz,**  
AC Transit Board of Directors
- **Aida Asuncion**  
AC Transit Chief Planning, Engineering and Construction Officer
- **Joe Callaway**  
AC Transit Engineering and Construction
- **Wil Buller**  
AC Transit Service Planning
- **Rama Pochiraju**  
AC Transit EB-BRT
- **Mitra Moheb**  
AC Transit EB-BRT
- **Beverly Greene**  
AC Transit Director of Community Relations
- **Estee Sepulveda**  
AC Transit Community Relation
- **Hannah Lindelof**  
BART
- **Mariana Parreiras**  
BART
- **Chris Segur**  
Parsons Transportation
- **Thomas Kronmeyer**  
Community Design





**Facilities and Transportation Committee Meeting**

Meeting

**Tuesday, June 02, 2015**

Date

**PUBLIC MEETING SIGN-IN SHEET**

(This information may be used for future public hearing/meeting notification and may be published.)

| NAME                          | ADDRESS  | TELEPHONE NUMBER / E-MAIL |
|-------------------------------|--|---------------------------|
| 1. MIGUEL MARTINEZ            | 3322A INTERNATIONAL DAICLAND                   | 510 681 3962              |
| 2. JOE CALLANAN<br>AC Transit | 1600 Franklin ST<br>OAKLAND CA                 | 510 891-7220              |
| 3. Garrett Kaya<br>Parsons    | 155 GRAND AVE<br>OAKLAND CA                    | 510 285 1588              |
| 4. CHRIS SEGUR<br>PARSONS     | 155 GRAND AVE, SUITE 350<br>OAKLAND, CA        | (916) 340-5167            |
| 5. DEBBIE PALATI              | COSL   | 510/577-6020              |
| 6. Thomas Kronenmyer          | 350 Frank Ogawa Plaza, SF<br>Oakland, CA 94612 | (510) 837-4569            |
| 7. Helene Fried               | 1233 De Haro St<br>SF CA 94102                 | (415) 643-3175            |
| 8. Jim Prola                  | on file  | observer                  |
| 9. Beverly Greene             | AC Transit 94612<br>1600 Franklin, Oakland     |                           |
| 10. Anstise Osakwe            | COSL   | (510) 577-3486            |
| 11. Mimi Marshall             | "  | 3389                      |
| 12. Cynthia Fattember         | COSL   | 13352                     |
| 13. Aida Asuncion             | 1600 Franklin<br>Oakland Ca                    | 818 579 2699              |
| 14. Nick Thom                 | CSL  |                           |
| 15. Dborah Cole               | CityComed                                      |                           |
| 16. Wil Buller                | AC Transit                                     | 510-891-5414              |
| 17. Robert Del Rosario        | "  | "                         |

**Facilities and Transportation Committee Meeting**  
Meeting

**Tuesday, June 02, 2015**  
Date

**PUBLIC MEETING SIGN-IN SHEET**

(This information may be used for future public hearing/meeting notification and may be published.)

| NAME               | ADDRESS | TELEPHONE NUMBER / E-MAIL         |
|--------------------|---------|-----------------------------------|
| 16. Keith Cook     | COSL    |                                   |
| 17. K. Fry         | COSL    |                                   |
| 18. Manana Pineres | BART    | 510.464.6169<br>mpineres@bart.gov |
| 19. Hannah Lindelf | BART    | 510.464-6426<br>hlindelf@bart.gov |
| 20.                |         |                                   |
| 21.                |         |                                   |
| 22.                |         |                                   |
| 23.                |         |                                   |
| 24.                |         |                                   |
| 25.                |         |                                   |
| 26.                |         |                                   |
| 27.                |         |                                   |
| 28.                |         |                                   |
| 29.                |         |                                   |
| 30.                |         |                                   |